

**Schütte ADH 160 8-spindle automatic chucking automat (WKG 386)**

Manufacturer: Schütte

Model: ADH 160

Weight: 11t

Year of manufacture: 1981

Machine No.: 225

General / technical data:

max. turning length: 125mm

max. workpiece diameter: 168mm

max. drilling depth: 125mm

adjustable number of pieces: from 3,4 to 450 sec.

working hours: 8.200h

working spindle speeds: from 90 to 1120 rpm

footprint (l x w x h): approx. 4730 x 1700 x 2120 mm

power supply: 380V / 50Hz

Accessories:

7 Cross slide

8 Longitudinal slide

Threading device

4x 2-jaw chuck Ø160mm

chuck type: pull chuck with clamping diameter 15

Chuck type: Röhms 0W-406 682 Clamping force 1200 da N

4x 3-jaw chuck Ø160mm

Chuck type: Draw chuck with clamping diameter 15

Chuck type: Röhms 1W-406 681 Clamping force 1800 da N

Insertion arm over chuck 100mm. The workpiece is fed to the insertion arm by a swivel arm and rotary gripper.

Remark:

The machine is very well preserved and has accumulated very few hours of operation.

The machine is set up for crankshaft halves for small combustion engines.



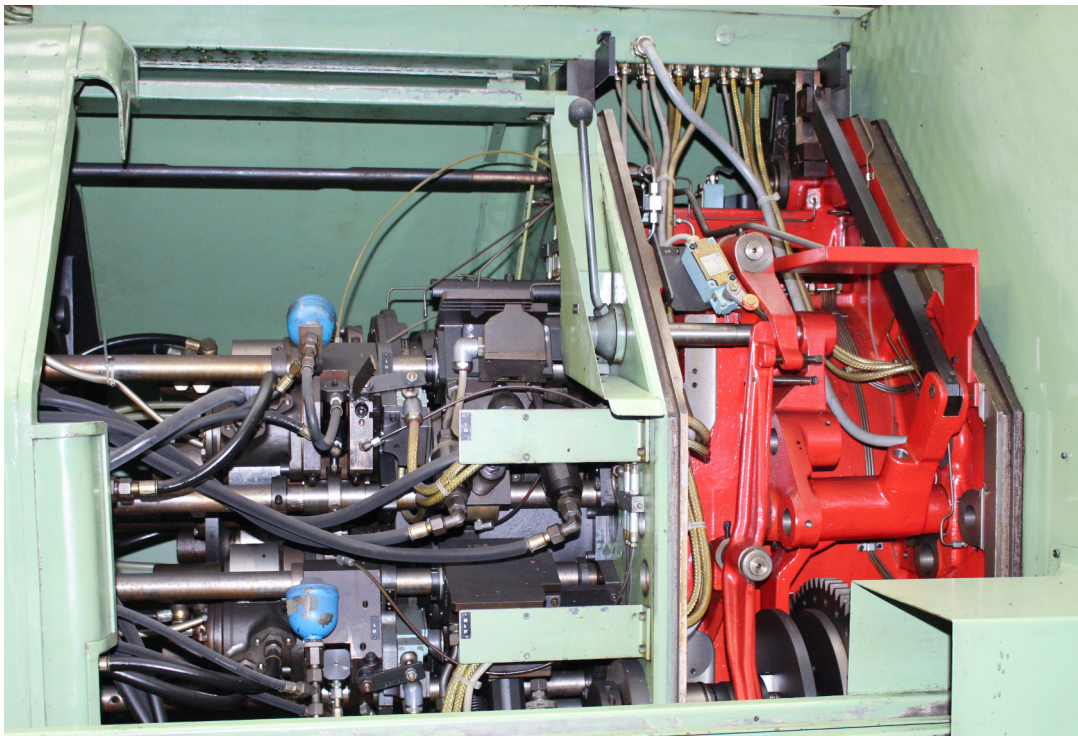
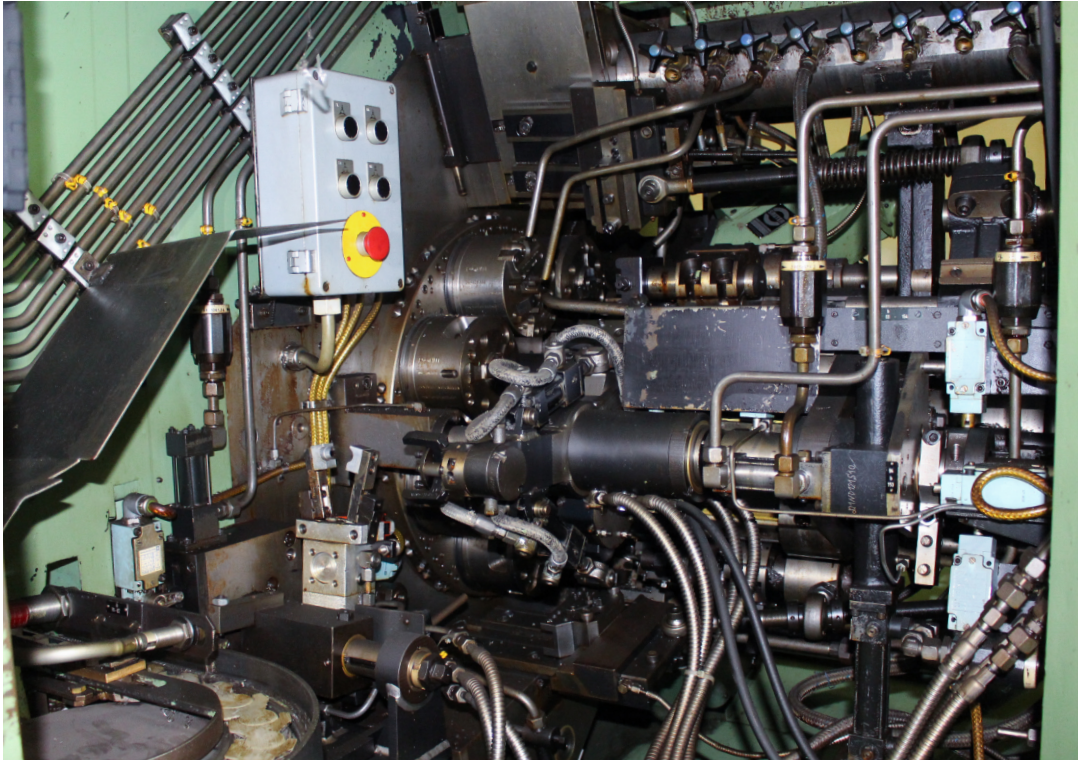


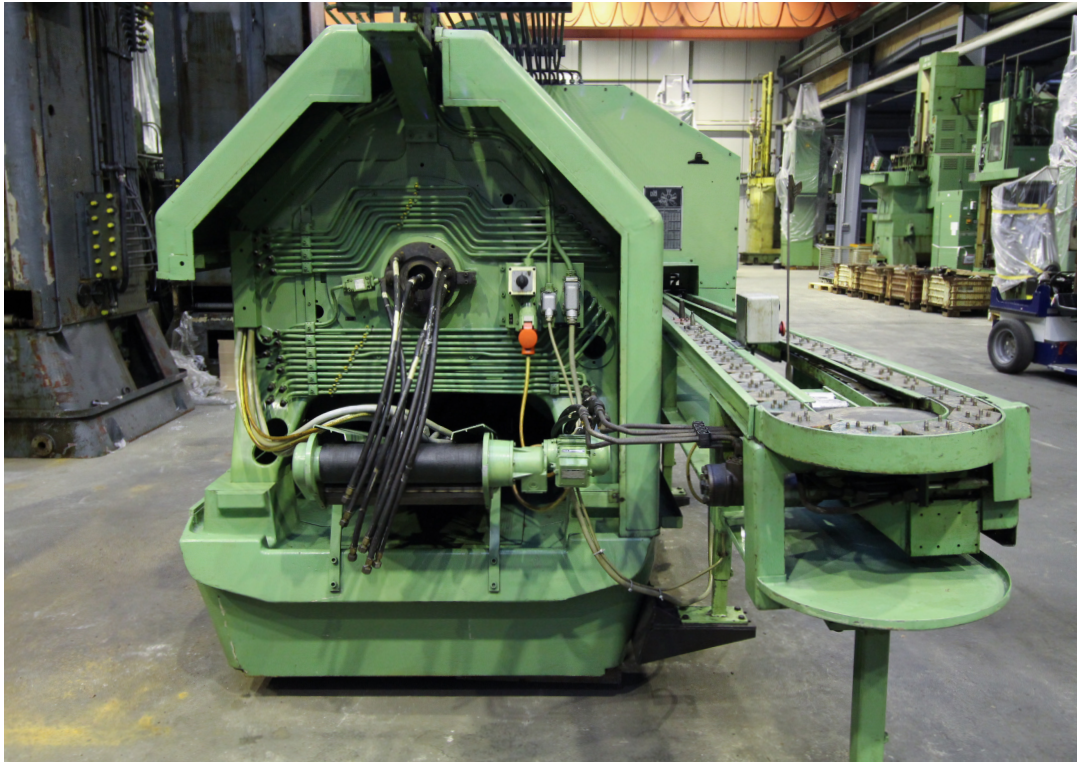
Schütte ADH 160 8-spindle automatic chucking automat (WKG 386)

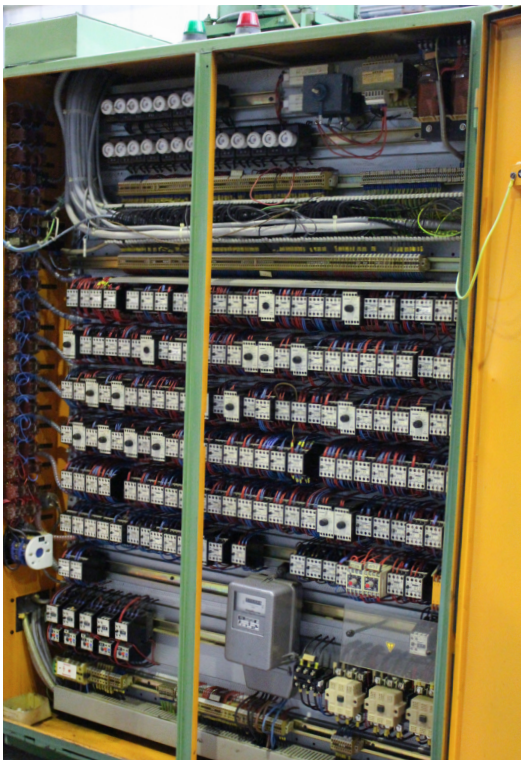
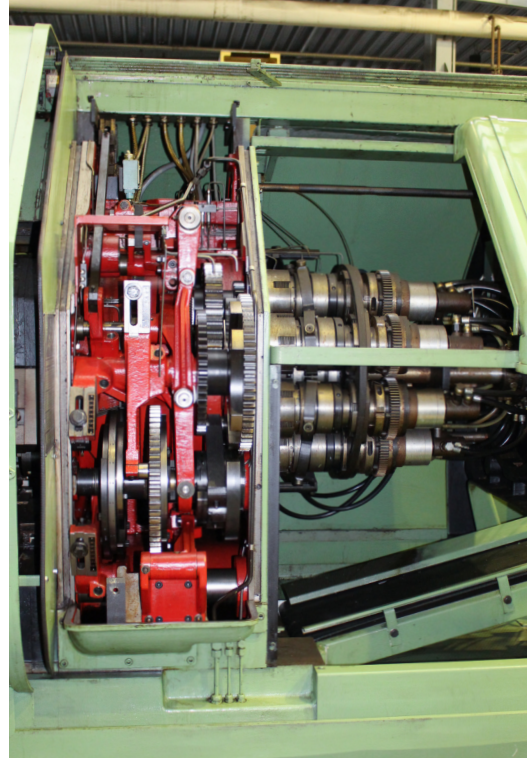




Schütte ADH 160 8-spindle automatic chucking automat (WKG 386)



**Schütte ADH 160 8-spindle automatic chucking automat (WKG 386)**

**Schütte ADH 160 8-spindle automatic chucking automat (WKG 386)**



General information

We always have a large selection of **approx. 80 used broaching machines** with tractive forces from 3,000 kg to 63,000 kg in horizontal as well as vertical design in stock. A large part of the broaching machines in stock can be inspected ready for demonstration.

If required, we can offer you used equipment such as pulling heads, needle lifters, broaching tools and other specific accessories.

We are a contract broaching company and can also help you with technical questions from 50 years of experience in broaching technology.



Picture from our used machines stock, with horizontal and vertical machines up to **16.000 kg** tractive force



Picture from our used machines stock, with vertical machines up to **63.000 kg** tractive force



Due to our large stock of used broaching machines, we always have a large number of Rausch broaching machines of the RS3, RS4 and RS6 series in stock. The machines are often getting on in years, so that the mechanical drive, which is also the guide of the machine, no longer achieves the desired quality and accuracy in the clearing process.

We specialize in the repair and overhaul, as well as the supply of spare parts for these machines. We supply without exception high quality spare parts manufactured in Germany according to our drawings. We have our spindle nuts cast from a particularly wear-resistant bronze alloy according to our models to ensure the highest quality.

We inspect the used Rausch machines and can, if necessary, repair them in different variants. This can range from simple repair, replacement of wear parts, up to a general overhaul with "CE" marking.

