



Alfing connecting-rod pilot drilling and facing machine (WKG 308)

Manufacturer: Alfing

Model: E II Sonder

Year of manufacture: 1976

Machine No.: 10-02541

Weight: approx. 42t

General / technical specifications:

Connecting rod gauge: 400mm - 1.100mm

Spindle thickness: depending on tool up to Ø350mm

footprint (l x w x h): approx. 6000 x 10000 x 3000 mm

Power supply: 380V / 50Hz / 180kW

Remark:

ALFING special machine for fine spindle machining of connecting rod bearing seats for large engines.

The machine has a clamping device that can be moved on the center bed. Machining is performed on 2 sides.

Station 01 D with laterally movable slide unit for adjusting the stitch size.

The machine has a splash guard for wet machining.

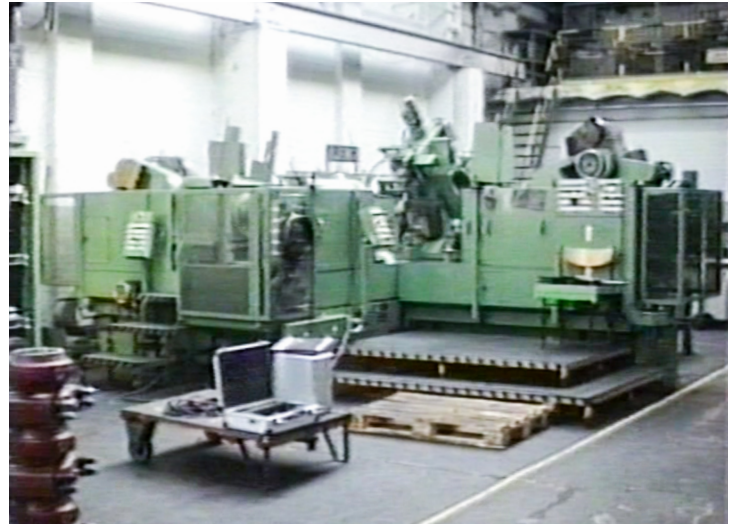
Connecting rods of type 540 and type 528 were manufactured on the machine (Deutz engines up to 300 liters displacement and 4000 HP).

Consisting of:

- 1 machine bed
- 2 slide units 630 x 800
- 1 slide machine unit 630 x 630
- 2 headstocks WS 200 x 250 x 6 and WS 220 x 250 x 8
- 2 facing devices
- fixture for clamping BVM 540 and clamping BAM 528

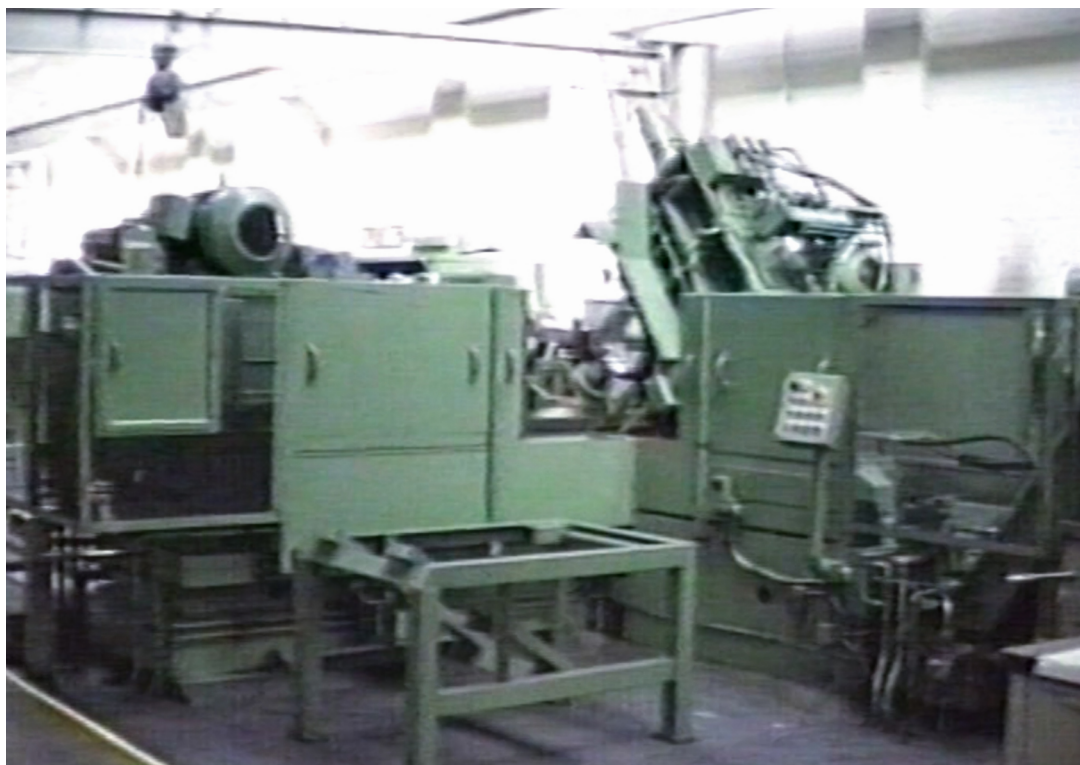
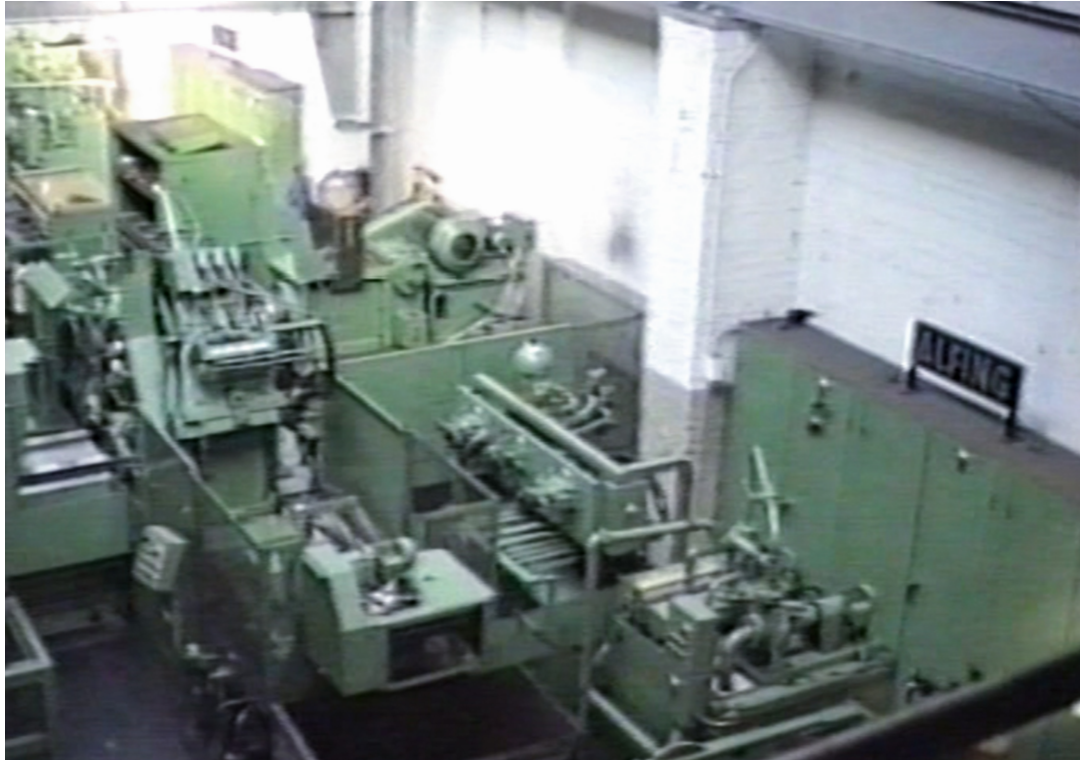
Accessories:

- 6 switch cabinets
- 1 hydraulic power unit
- 1 central lubrication unit



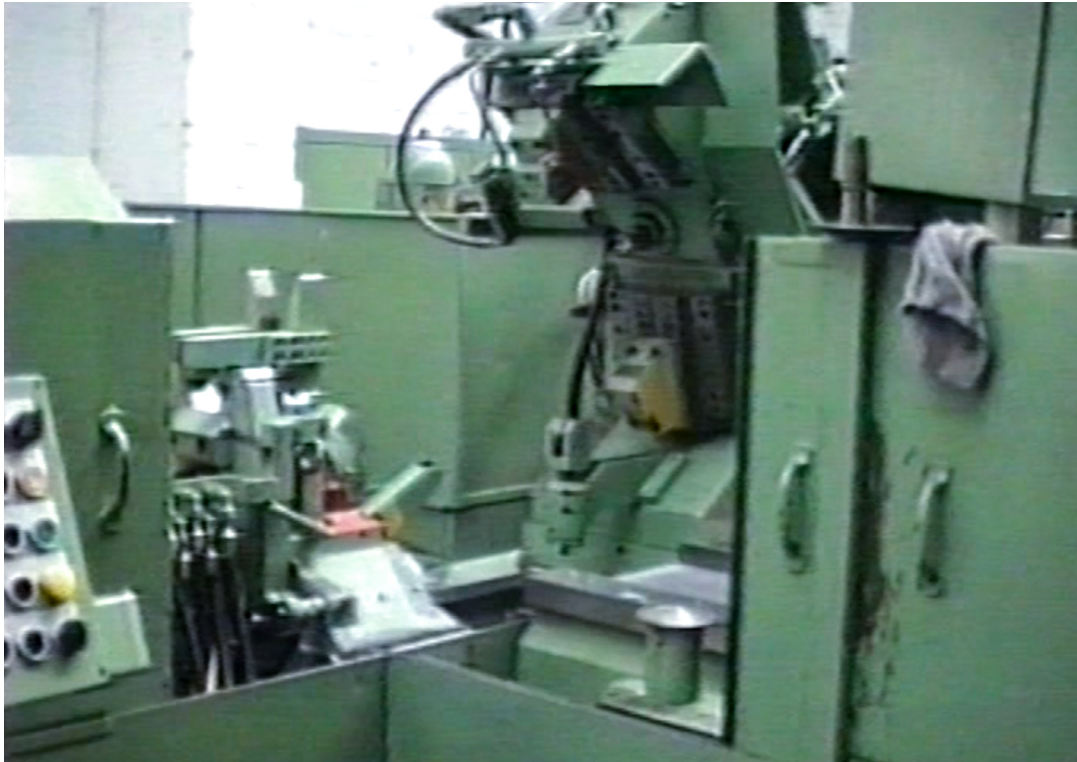


Alfing connecting-rod pilot drilling and facing machine (WKG 308)



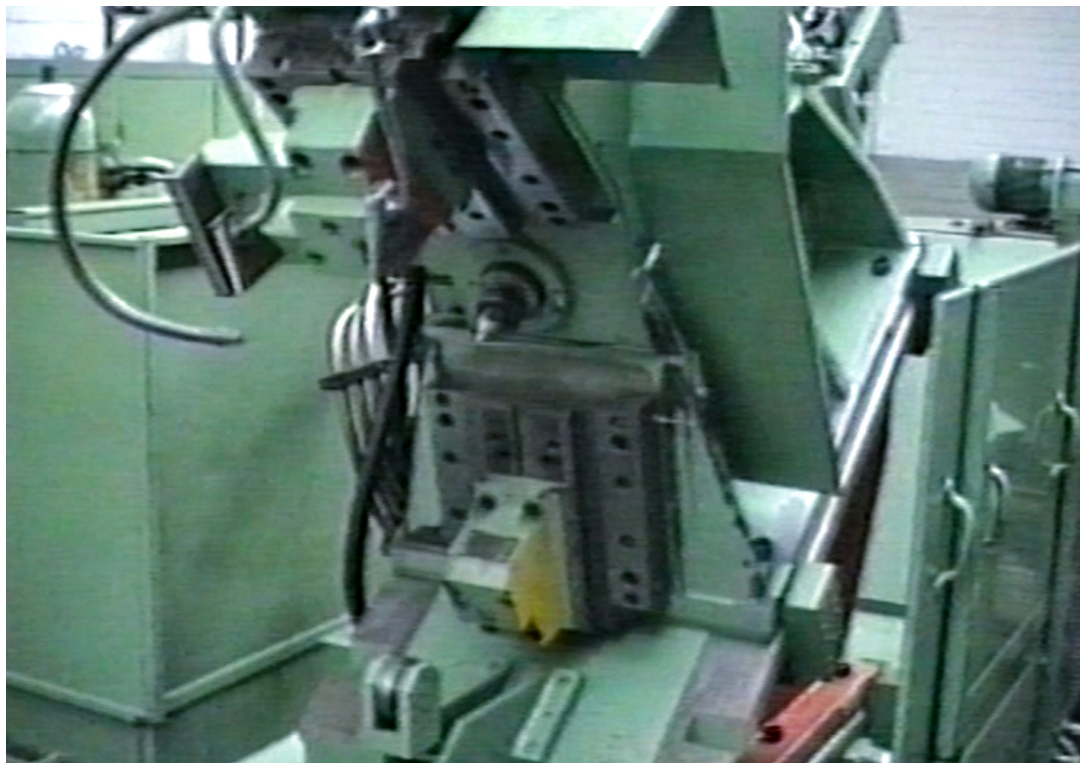
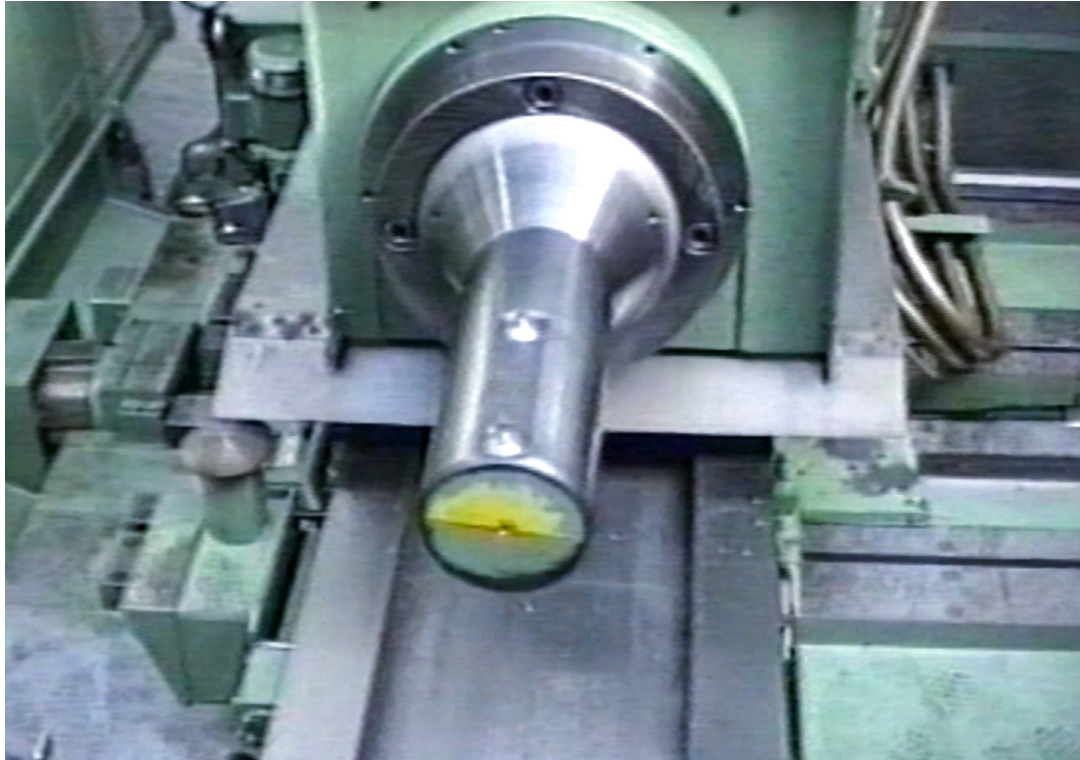


Alfing connecting-rod pilot drilling and facing machine (WKG 308)



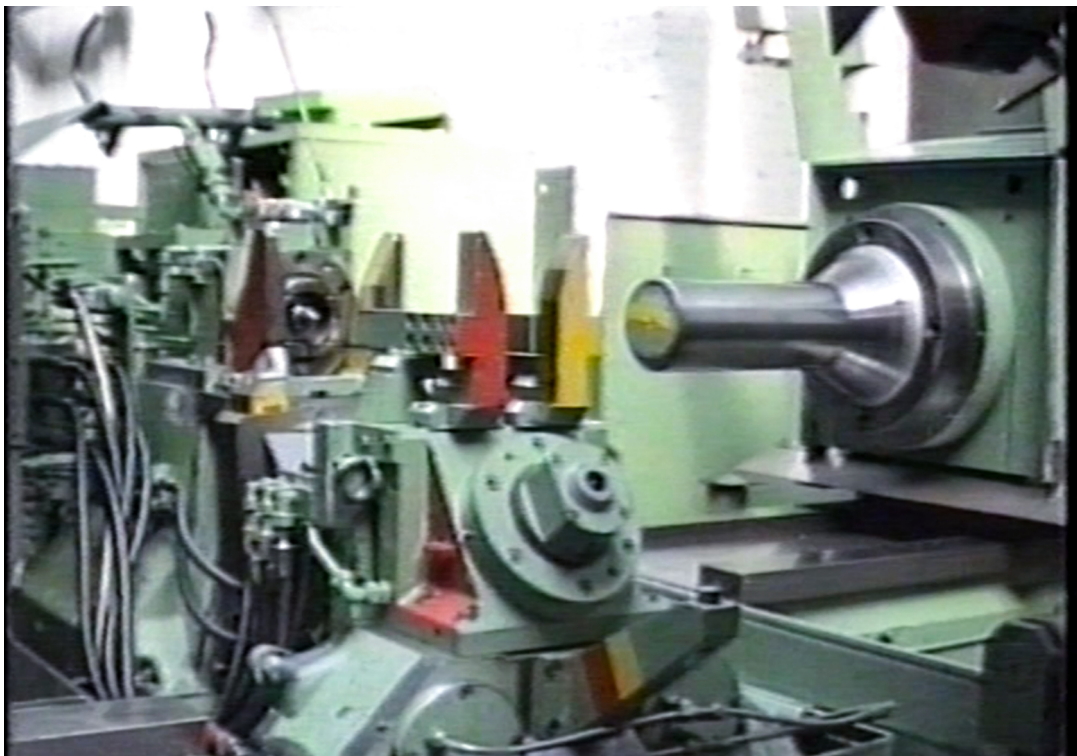
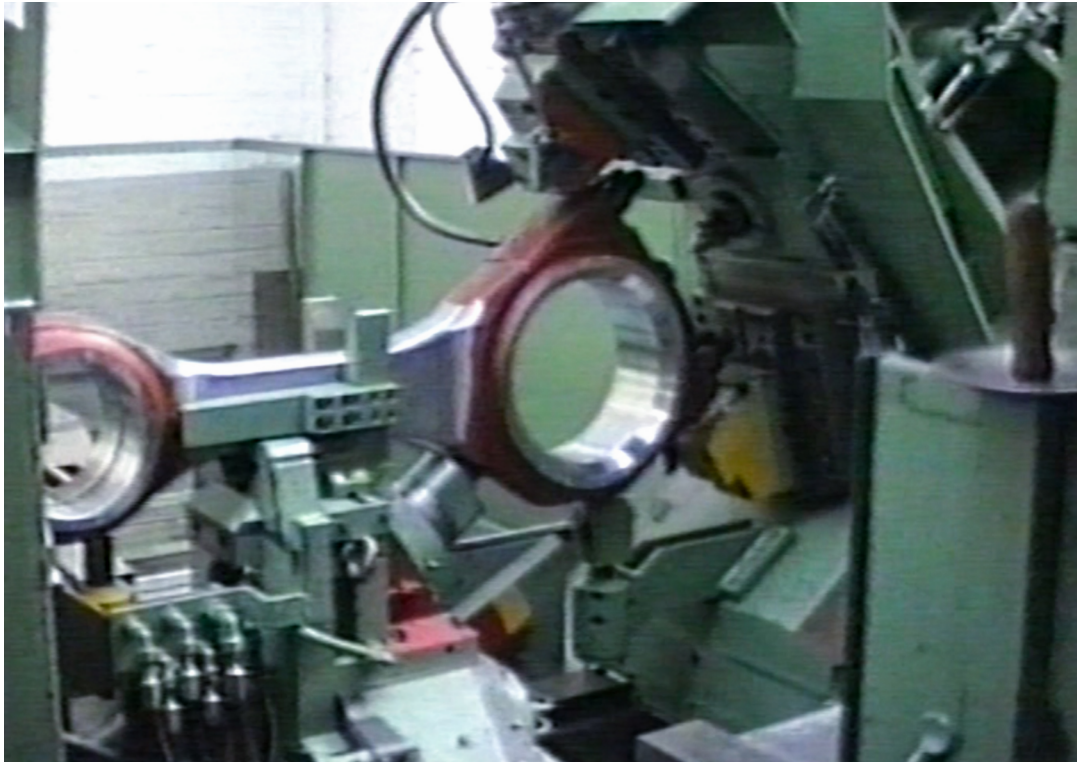


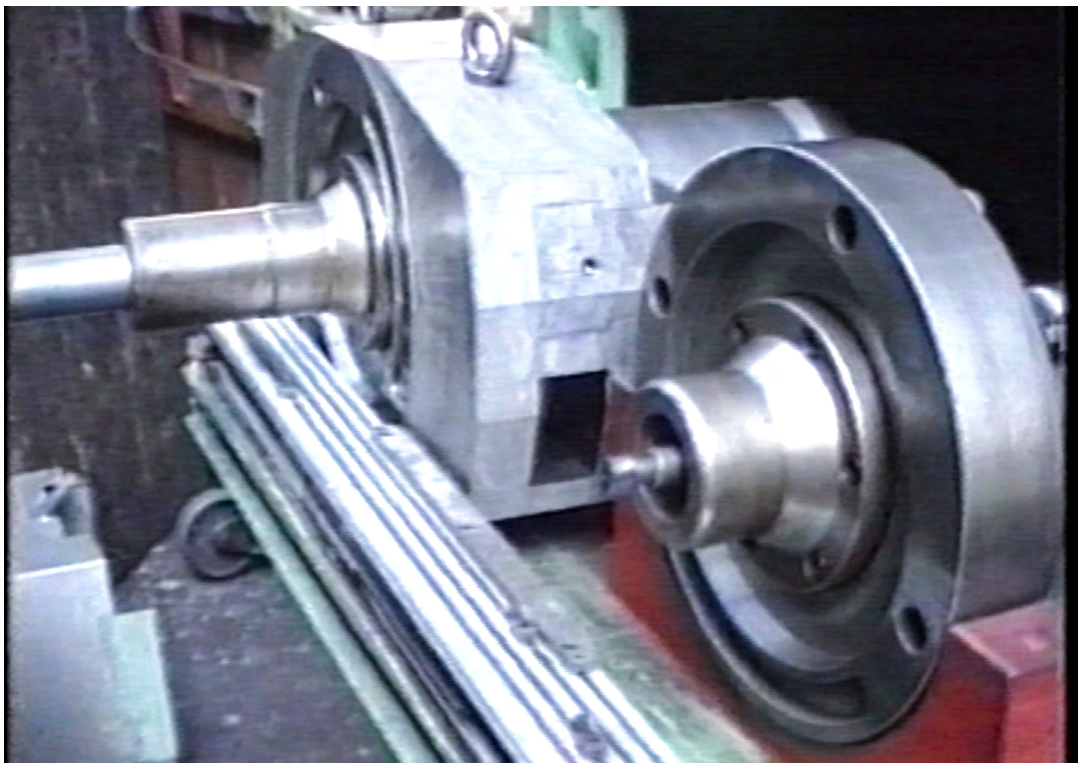
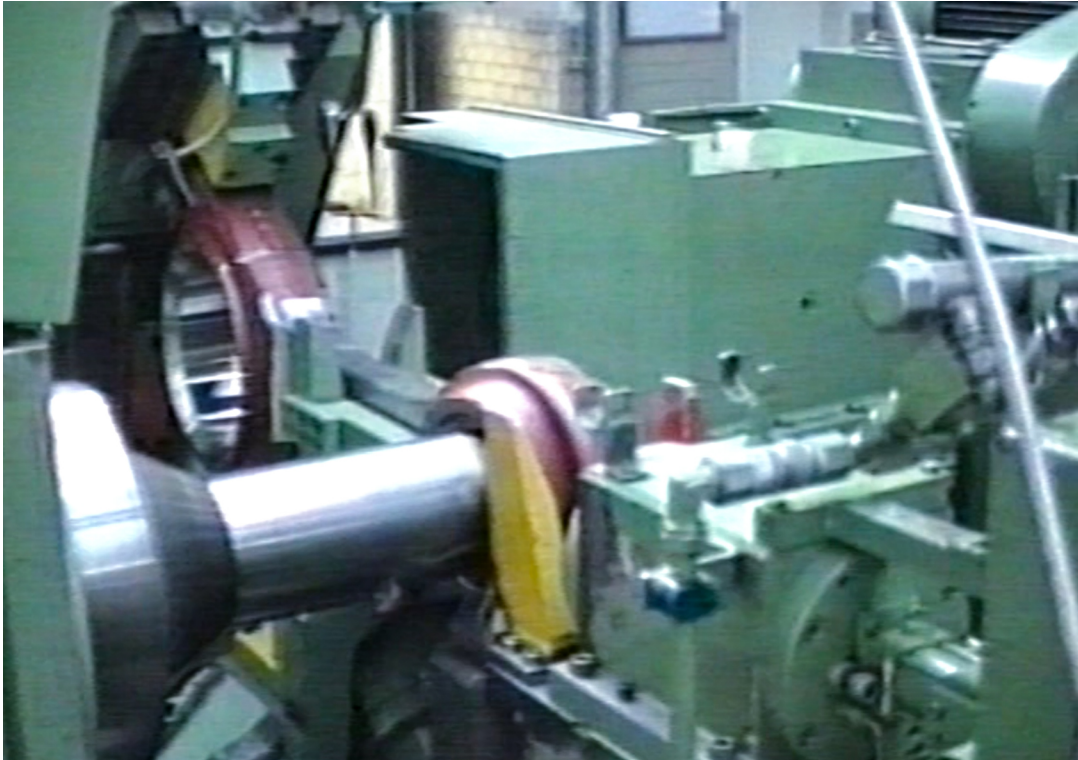
Alfing connecting-rod pilot drilling and facing machine (WKG 308)





Alfing connecting-rod pilot drilling and facing machine (WKG 308)



**Alfing connecting-rod pilot drilling and facing machine (WKG 308)**



General information

We always have a large selection of approx. **80 used broaching machines** with tractive forces from 3,000 kg to 63,000 kg in horizontal as well as vertical design in stock. A large part of the broaching machines in stock can be inspected ready for demonstration.

If required, we can offer you used equipment such as pulling heads, needle lifters, broaching tools and other specific accessories.

We are a contract broaching company and can also help you with technical questions from 50 years of experience in broaching technology.



Picture from our used machines stock, with horizontal and vertical machines up to **16.000 kg** tractive force



Picture from our used machines stock, with vertical machines up to **63.000 kg** tractive force