



Karl Klink chain broaching machine horizontal (WKG 1175 & 1176)

Manufacturer: Karl Klink

Model: RKW 25-3800-520

Weight: 50t

Year of manufacture: 1990

Machine No.: 3048 & 3047

General / technical data:

Chain broaching machine for continuous outside broaching

Tractive force: 25.000kg

cutting speed: 7,2 / 8,1 / 9,6m/min

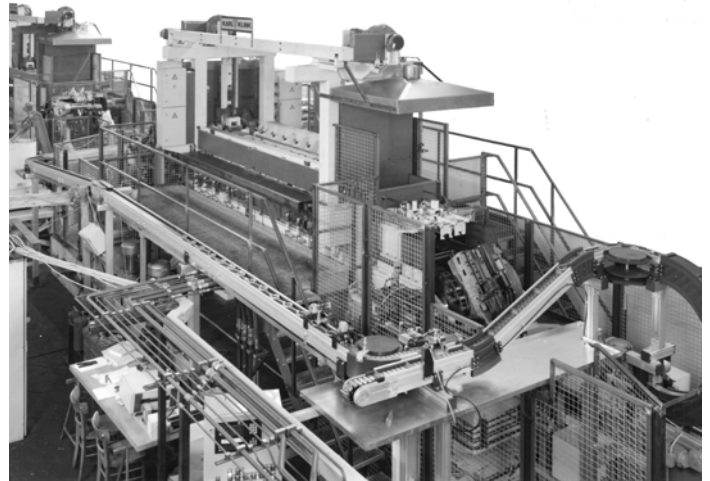
maximum tool length: 3520mm

passage width: 520mm

clamping area of the tool carrier: 3520 x 460 mm

dimension: 12.300 x 6.400 x 4650mm

power supply: 380V 50Hz / 110kW



Accessories/ Special equipment:

- 6 tool carriers for tool change
- Machine documentation

Remark / General

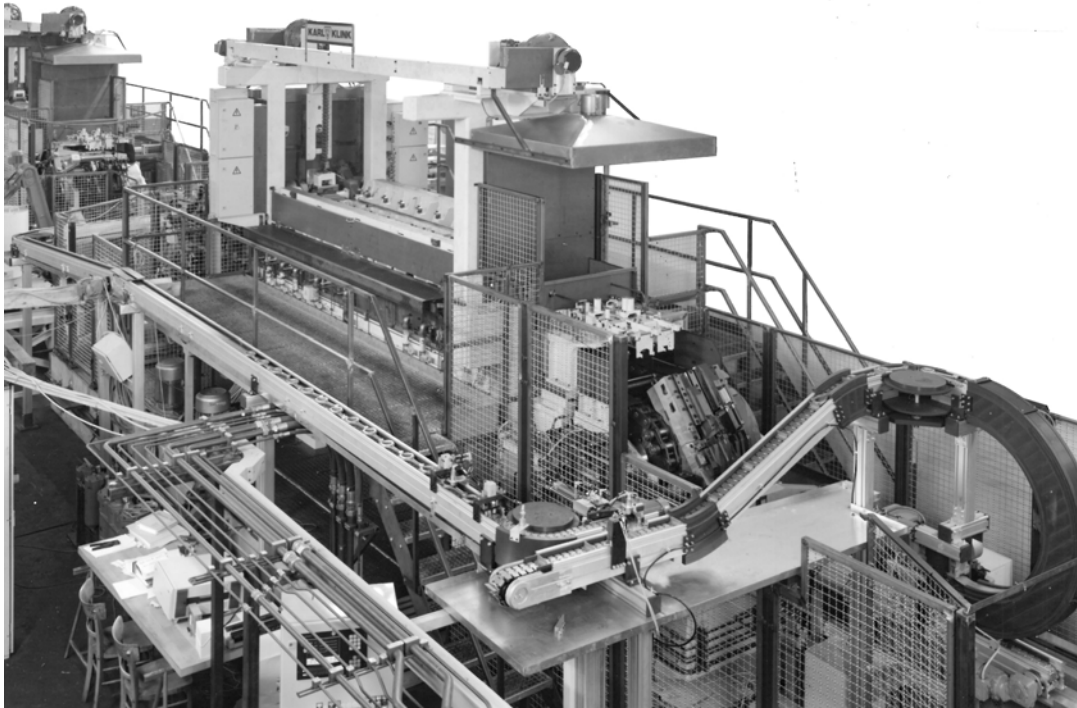
The machines are in good condition. The machines are dismantled in our warehouse. The total volume of the plant includes several trucks (approx. 70t per machine).

The machines have produced connecting rods for passenger car diesel engines. Chain broaching machines are designed for mass production.

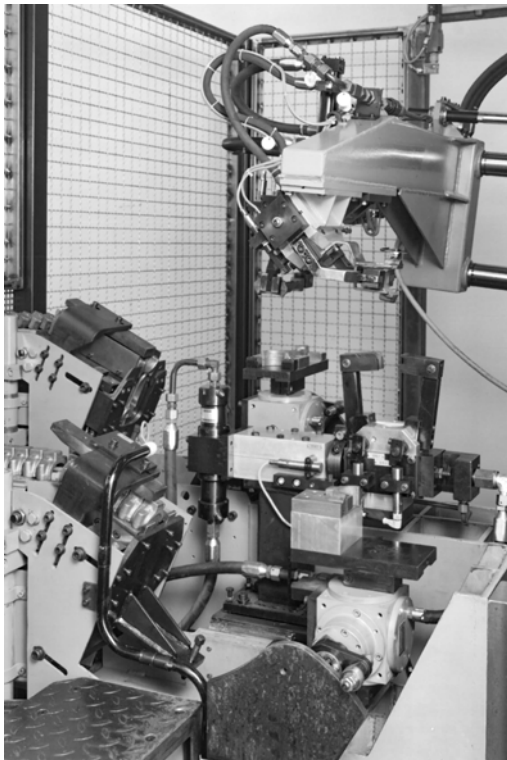
The continuous (backstroke-free) working process in chain broaching is designed for maximum achievable productivity in external broaching.

The chain broaching process is the only broaching process without a return stroke of the tools or workpieces. During chain broaching, the workpiece is continuously moved past the tool, thus performing the feed motion. This unique broaching process is only used for very large quantities in series production.

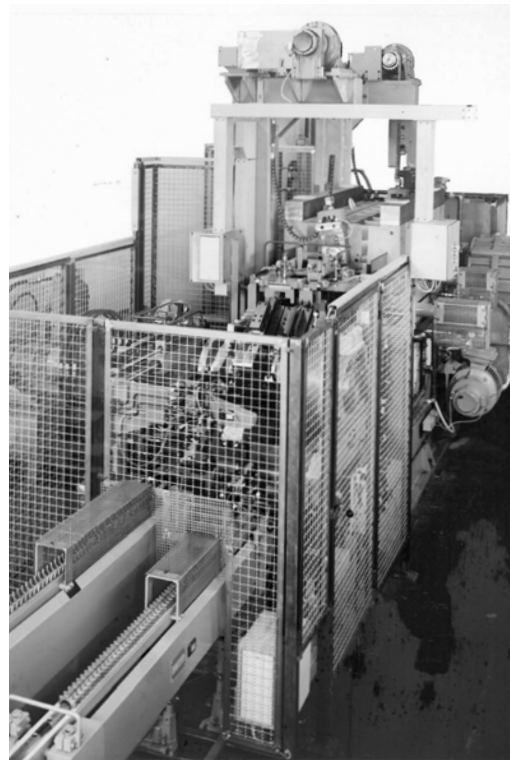
Karl Klink chain broaching machine horizontal (WKG 1175 & 1176)



Manufacturer image

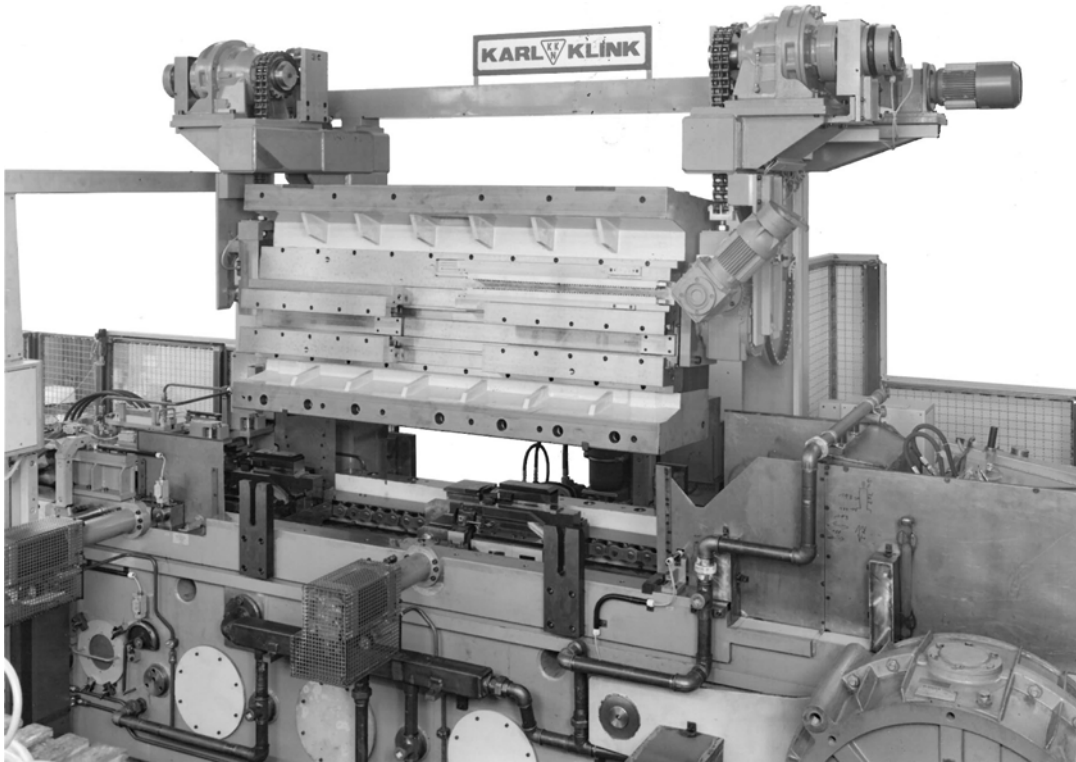


Manufacturer image

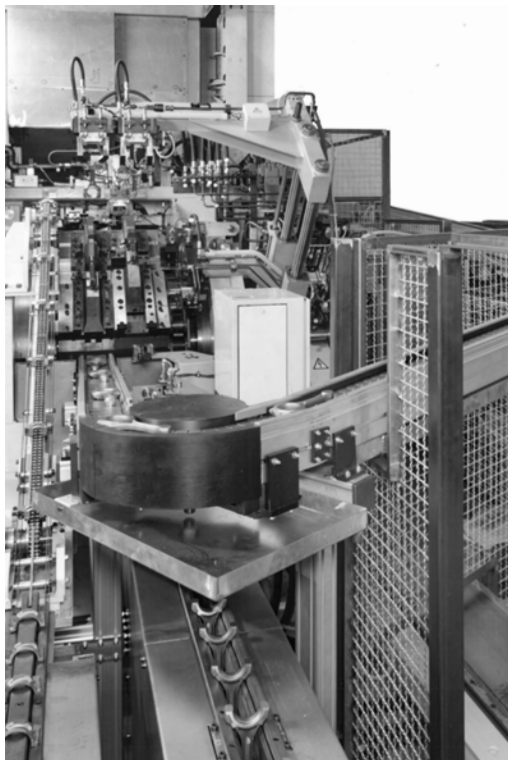


Manufacturer image

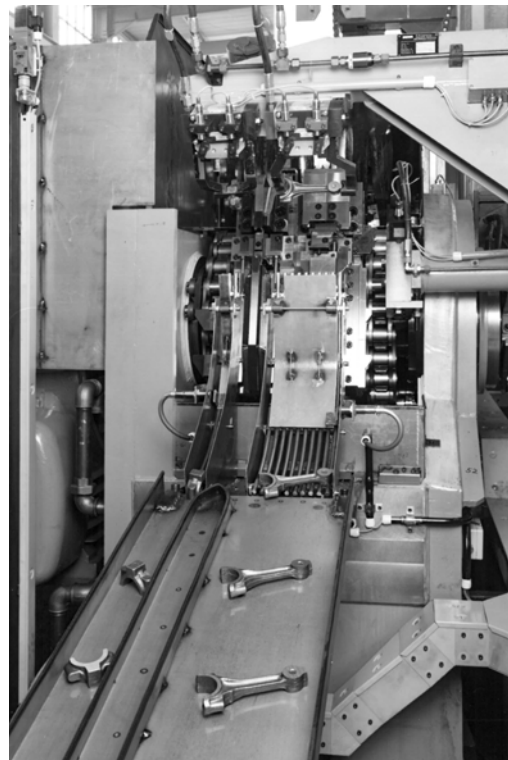
Karl Klink chain broaching machine horizontal (WKG 1175 & 1176)



Manufacturer image



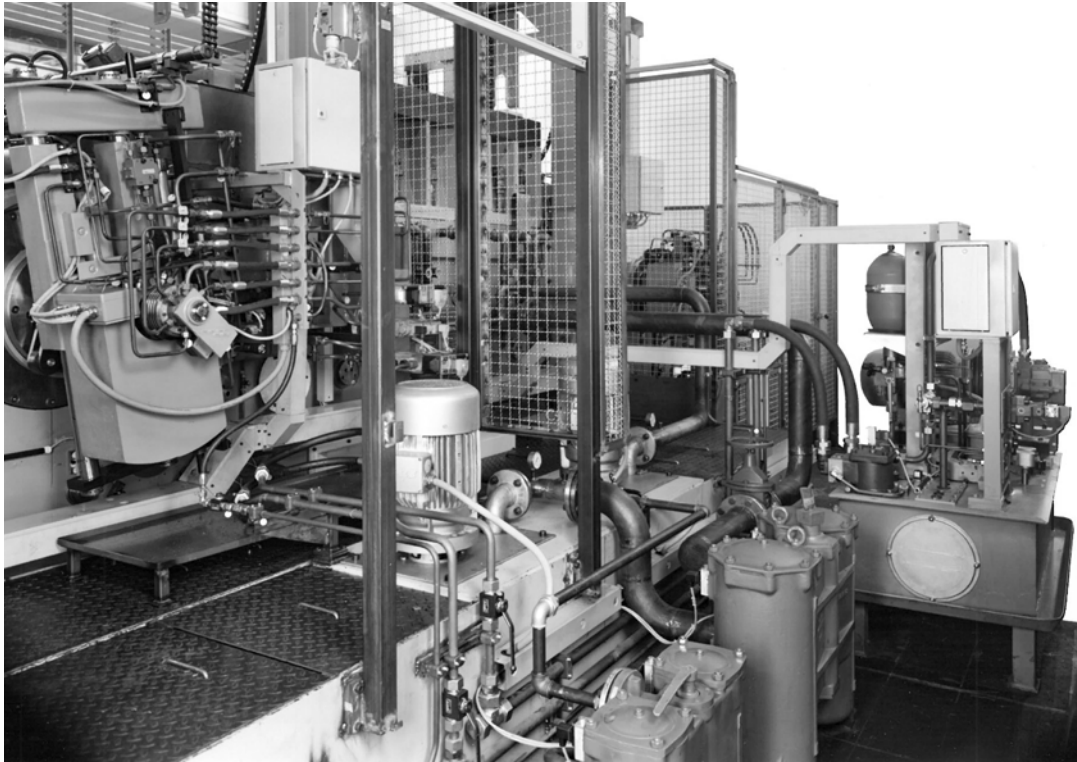
Manufacturer image



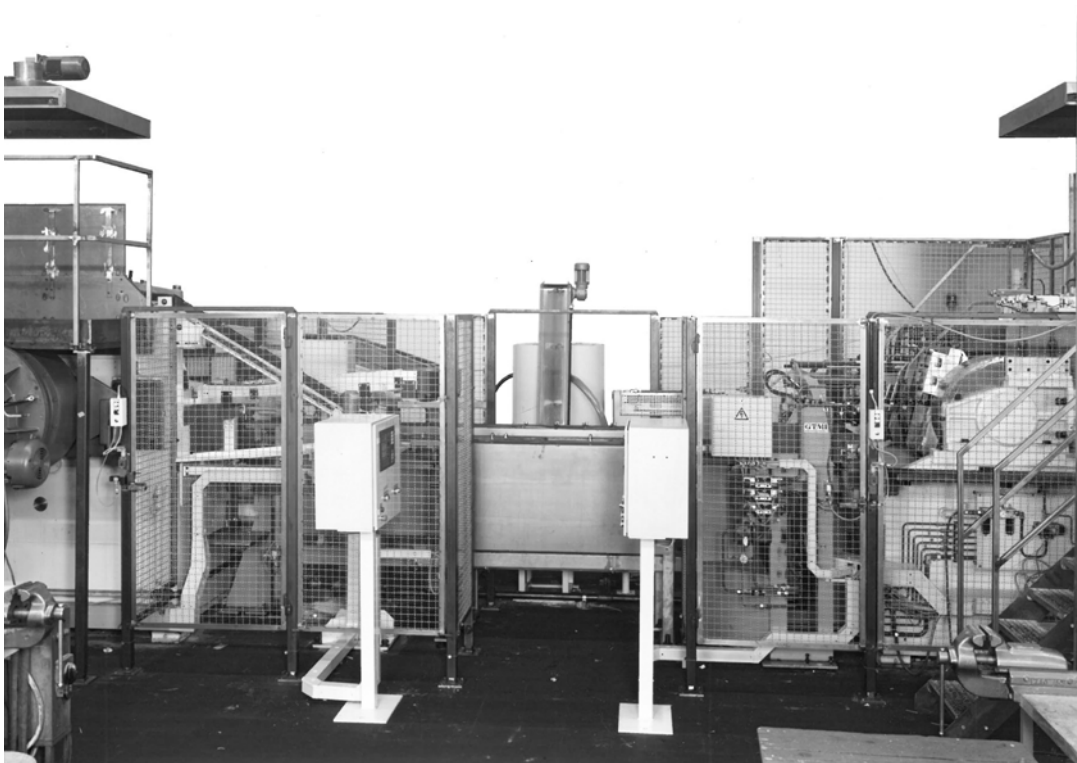
Manufacturer image



Karl Klink chain broaching machine horizontal (WKG 1175 & 1176)



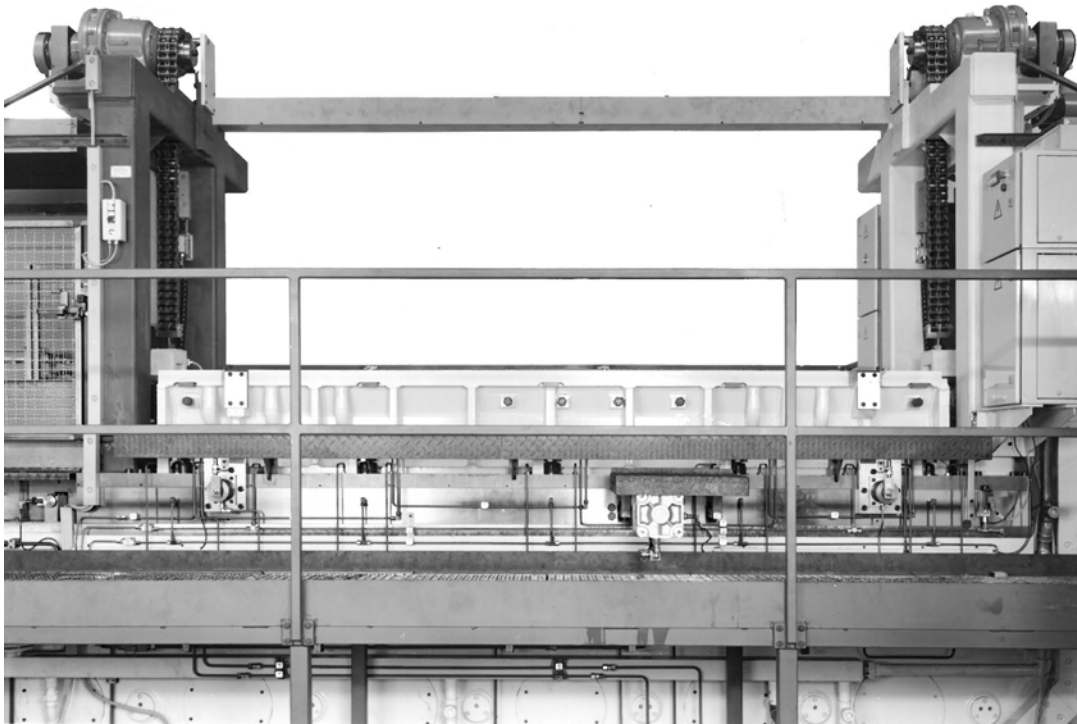
Manufacturer image



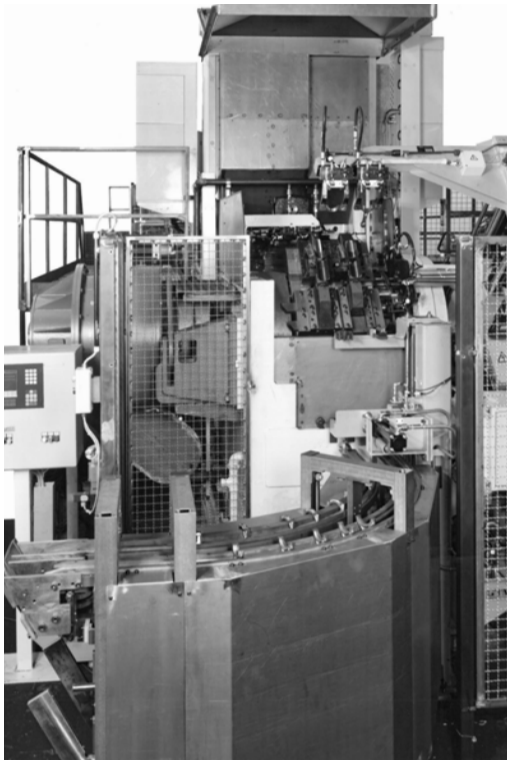
Manufacturer image



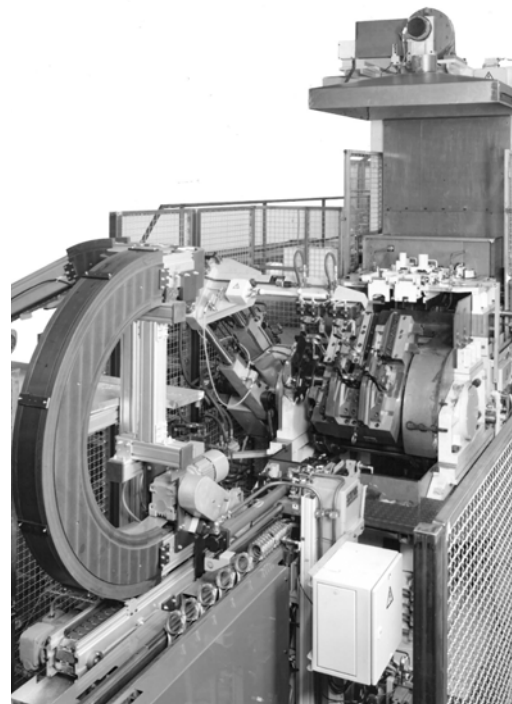
Karl Klink chain broaching machine horizontal (WKG 1175 & 1176)



Manufacturer image



Manufacturer image



Manufacturer image

Karl Klink chain broaching machine horizontal (WKG 1175 & 1176)

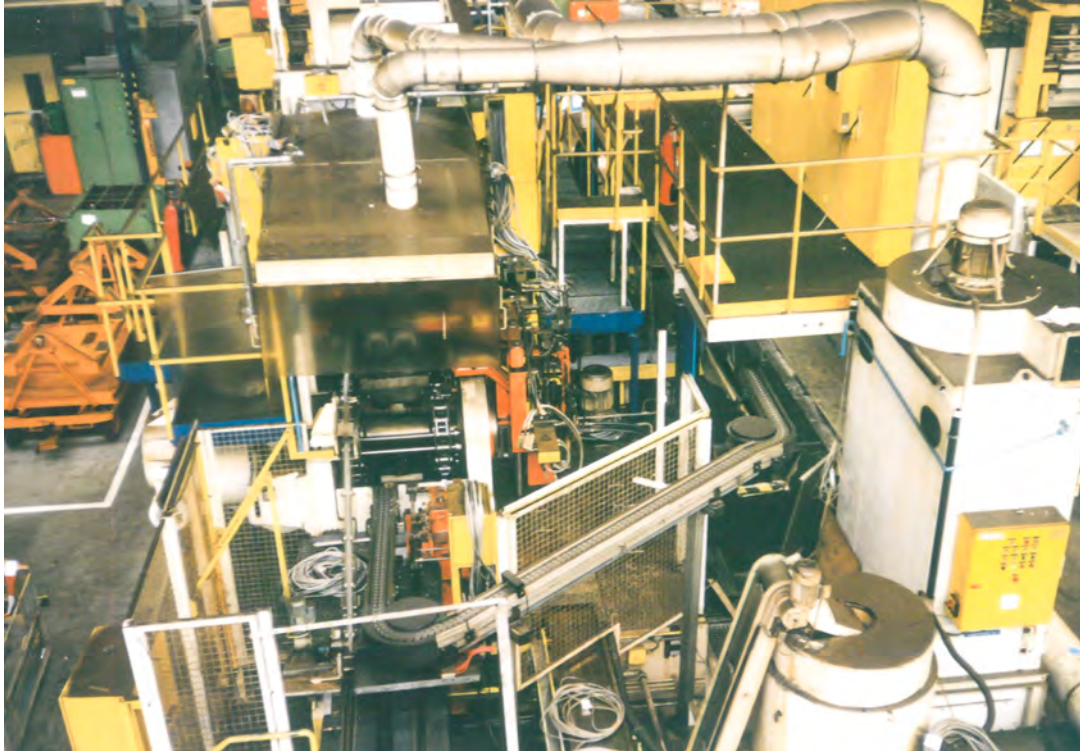


Machine disassembled on heavy duty trailers



General overview before disassembly

Karl Klink chain broaching machine horizontal (WKG 1175 & 1176)



General overview before disassembly



General overview before disassembly

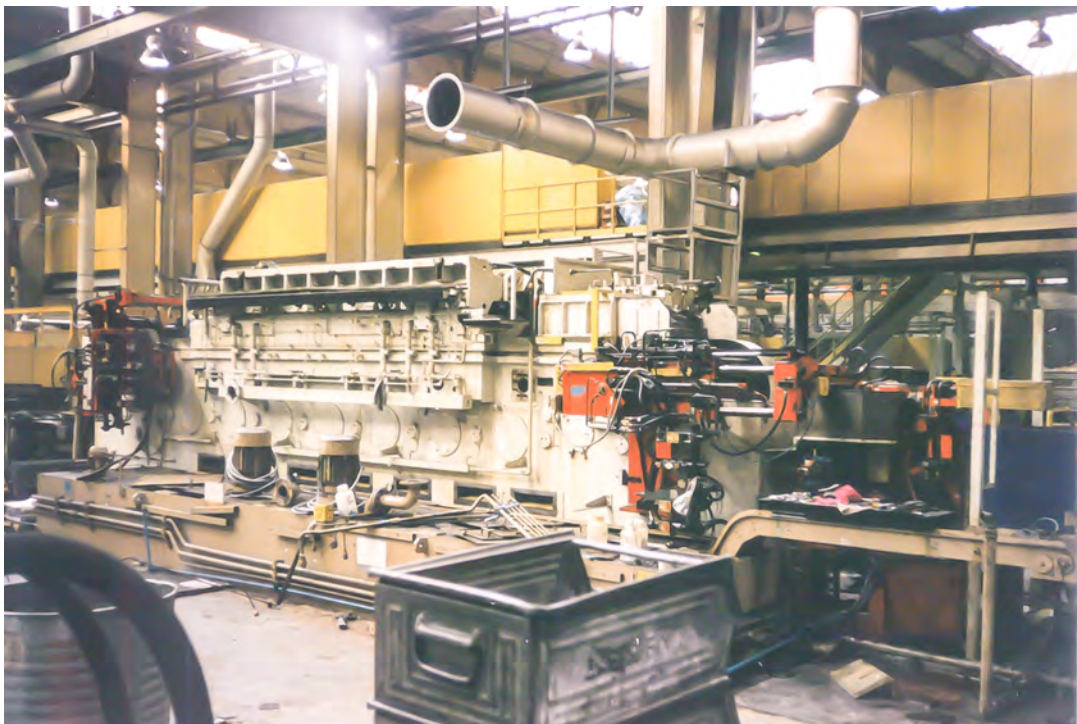


General overview before disassembly

Karl Klink chain broaching machine horizontal (WKG 1175 & 1176)



General overview before disassembly



General overview before disassembly

Karl Klink chain broaching machine horizontal (WKG 1175 & 1176)



General overview before disassembly



General overview before disassembly

General information

We always have a large selection of **approx. 80 used broaching machines** with tractive forces from 3,000 kg to 63,000 kg in horizontal as well as vertical design in stock. A large part of the broaching machines in stock can be inspected ready for demonstration.

If required, we can offer you used equipment such as pulling heads, needle lifters, broaching tools and other specific accessories.

We are a contract broaching company and can also help you with technical questions from 50 years of experience in broaching technology.
years of experience in clearing technology.



Picture from our used machines stock, with horizontal and vertical machines up to **16.000kg** tractive force



Picture from our used machines stock, with vertical machines up to **63.000kg** tractive force